

MUSEUM

OF THE SLOVAK CERAMIC SCULPTURE

The Slovak National Museum
Ľudovít Štúr Museum in Modra



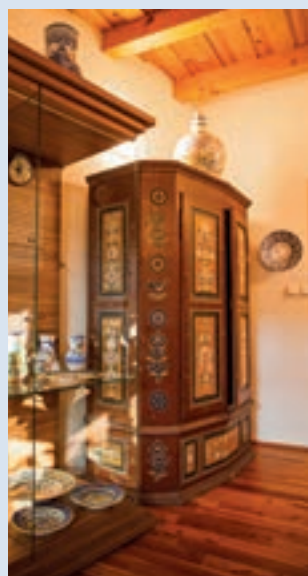
Kukučínova 15,
Modra

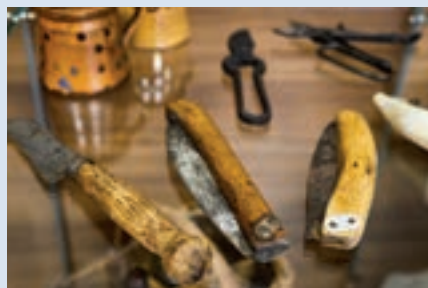


THE MUSEUM OF THE SLOVAK CERAMIC SCULPTURE

is established in the historical building of original winemaker's house from the 17th century in Modra. The museum was created as the part of the cross-border cooperation between the Slovak Republic and Austria 2007 – 2013 as the mutual project of the Slovak National Museum – Ľudovít Štúr Museum in Modra and Austrian Ethnographic Museum in Vienna TRA-CER – Traditions of Clay – a journey exploring ceramic heritage. Together with the Ignác Bizmayer Gallery, it forms an integrated complex which documents the ceramic tradition of Western Slovakia jug-making during the first years of the 20th century. The courtyard serves as an alternative area for cultural events and workshops.









CERAMICS EXHIBITION

Permanent exhibition reflects pottery and jug-making tradition in Modra which continues to this day. The history of local ceramic production is supported by written documents of 1636 and chronologically documented with exhibits in three museum rooms.

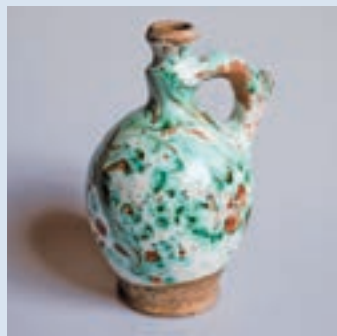


Only pottery, supplied to kitchens in the near and distant surroundings, was produced in Modra until 1830. Workshops produced clay pots of different sizes, dishes, plates, jars, saucepans, glasses, cups, lids, pots, poppy seeds crushing bins, fry pans, cake moulds, tiles for furnaces production and toys for children. The products of Modra potters were of characteristic shape and colour. Pottery was covered with brown, green or gold glaze and it served for normal home use.





Painted ceramics was brought to Modra by the arrival of several Hutterite jug shapers.



After removing the guilds, town Modra decided to keep a ceramic tradition and they established a school for ceramics apprentices – Ceramic-Industrial School *Agyagipartanmühely* in 1883. The school and later the private workshop of Jozef Mička produced pottery and jug ware. Recurring floral decorations applied to jugs in several strips parallel next to each other became the dominant décor of painted products. Twigs with flowers and leaves, complemented with smaller elements, were used as a design feature. In addition to floral features, stylized animal motifs as deer, hares, birds and farm animals were presented on ceramics.



A new chapter in the development of Modra ceramics goes back to 1911, when the plant transferred to a joint stock company.



After the Second World War, employees took Modra ceramic workshop management into their hands. In 1952, Slovak ceramics in Modra became an art-cooperative society and its title was changed to the Slovak Folk Majolica.



The new generation of ceramists, Ignác Bizmayer, Imrich Kóňa, Richard Hóz, Michal Horník, Rudolf Barčík, Vincent Labaj, Michal Petráš, appeared during the post-war period. Masters, the products of which are highly prized and deposited in museum and private collections.



Several employees of the factory used the opportunity to present themselves and they opened their own ceramics workshop in the 1990s. The Guild of Slovak ceramists-the association of ceramic craftsmen was founded in 1994.

Ceramics workshop in Modra has undergone many changes, often faced economic problems, always emerged from the crisis and continued in production.





The exposition of the Slovak Ceramic Sculpture Museum includes the showroom, where the works of contemporary ceramic masters and other artists are regularly presented.





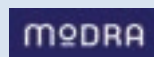
Iceland
Liechtenstein
Norway grants



The project „Clay Day – Magic of Clay“ was supported by the grant from Iceland, Liechtenstein and Norway in the amount of EUR 199,900.00 through the EEA Grants. The project is co-financed from the financial resources of the Slovak Republic national budget in the amount of EUR 29,985.00. The project aims at support to the capacities of cultural players and works with public.

Working together for a green, competitive, and inclusive Europe.

If you want to know more about programmes and projects financed by the EEA Grants in Slovakia, visit www.eeagrants.sk.



SNM – The Ľudovít Štúr Museum in Modra
The Museum of the Slovak Ceramic Sculpture
Kukučínova 15, 900 01 Modra



Opening Times:

November – March: Tuesday – Friday 8.30 a.m. – 4.00 p.m.

April – October: Tuesday – Friday 8.30 a.m. – 4.00 p.m.,

Saturday 9.00 a.m.– 3.00 p.m.

Contacts:

Tel.: +421 33 647 29 44

www.snm.sk

Text: Agáta Petrakovičová Šikulová

Photography: Lucia Mandincová

Graphic design: Miroslav Slámka

ISBN: 978-80-8060-547-6